

M A P



Measures personality

Predicts workplace behavior

WHAT IS MAP?

MAP is a comprehensive personality questionnaire that measures individual characteristics and predicts behaviors critical for working life. MAP is used for screening, selection and development of personnel.

The questionnaire is based on the Five Factor Model, the most empirically robust and well documented approach to measuring personality.

MAP predicts workplace related behavior and outcomes, such as job satisfaction, leadership and sales performance. MAP helps you identify individual strengths and development areas, both at managerial and co-worker levels. Common applications are recruitment, on-boarding, development, succession planning and career counselling.

UTILITY

MAP establishes an unbiased measure of personality and provides information that is crucial to an individual's potential to perform at work. It pinpoints personal characteristics that are difficult to discern through conventional selection methods such as interviews or CVs.

MAP outlines an individual's personality on several levels. You can either rank candidates according to the overall personality dimensions or use an in-depth profile with a detailed analysis of the individual's potential, strengths and development areas.

ADMINISTRATION

MAP is administered via Ascend by Assessio - a modern, safe and user-friendly web platform. The questionnaire is accessible via computer, tablet and smartphone.

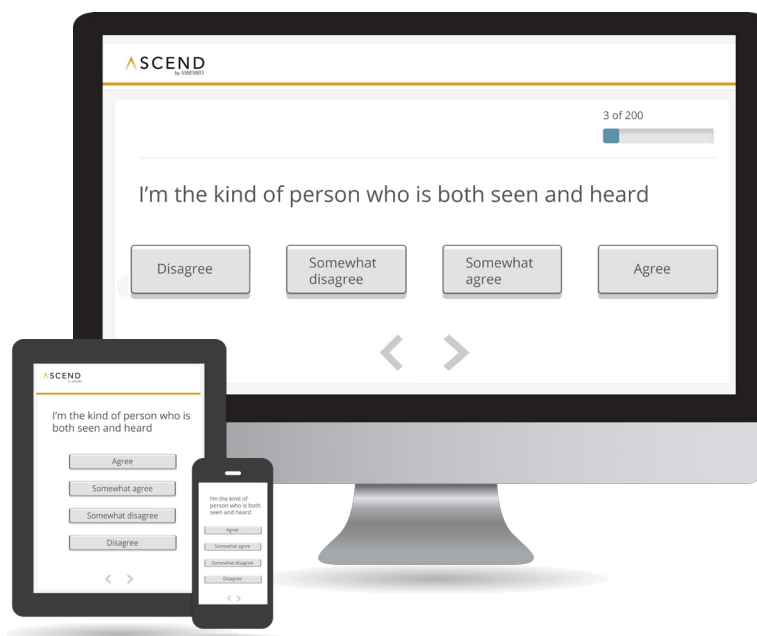
Ascend enables automatic candidate feedback and the reuse of test results in new recruitment projects.

The scores can be viewed on-screen for ranking purposes or downloaded as narrative reports for individual analysis.

REPORTS

The following reports are available:

- Data reports that include the scores of the main scales and provide a summary of a candidate's results.
- Descriptive reports that outline typical characteristics, behaviors and potential development areas.
- Comprehensive management reports focusing on leadership potential and development.



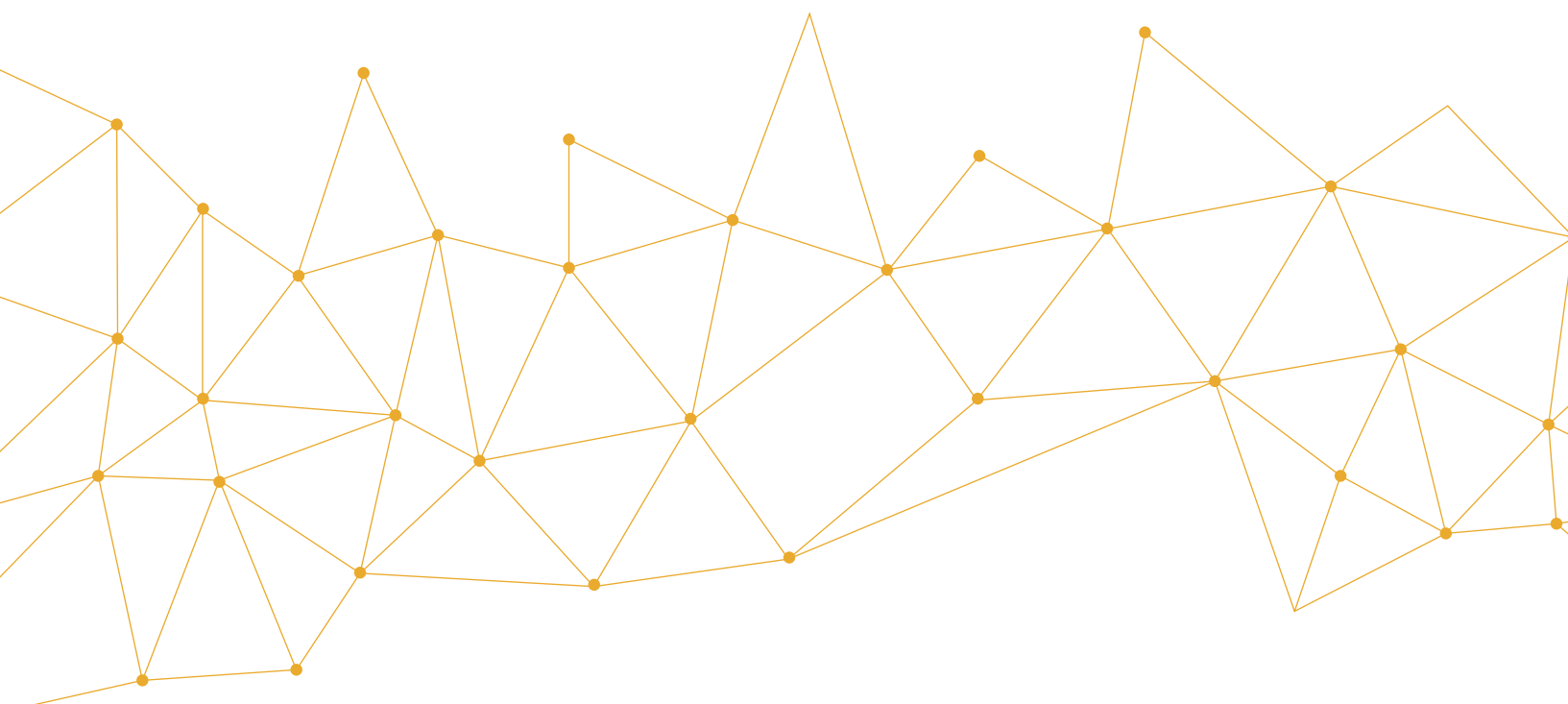
QUICK FACTS

- Based on the Five Factor Model
 - No time limit, approx 20 min
 - 5 scales, 25 subscales
 - Multiple report options
 - Available in 10+ languages
 - Certified by DNV GL
- Possible applications:
- Screening/Selection
 - Onboarding
 - Development
 - Succession planning
 - Career coaching

ABOUT ASSESSIO

Assessio is the leading publisher of psychometric tests in the Nordic region and a consulting organization with a focus on Human Capital Management. The company has a long history of developing research-based tools for selection and development of personnel.

The business was started in 1954 by the Swedish Psychological Society and has since then evolved into an international test publishing house and modern HR consultancy organization with operations in Sweden, Norway and Finland. The tests of Assessio are available in over 30 countries around the world.



ASSESSIO